

The **ALTifix-Zn** anchoring support can be used as an anchor point or lifeline support on wooden structures with zinc or copper covering.

Special features :

- ▶ Installation on zinc roofing, minimum distance between seals = 430mm
- ▶ Installation does not require any cutting work on the roof beforehand
- ▶ Can be removed independently without damaging the roof
- ▶ Built-in energy absorber
- ▶ There can be stress to all axes
- ▶ Made of stainless steel
- ▶ EN 795 compliant



Fastening onto wooden boarding :



Fastening onto wooden boarding comprising :

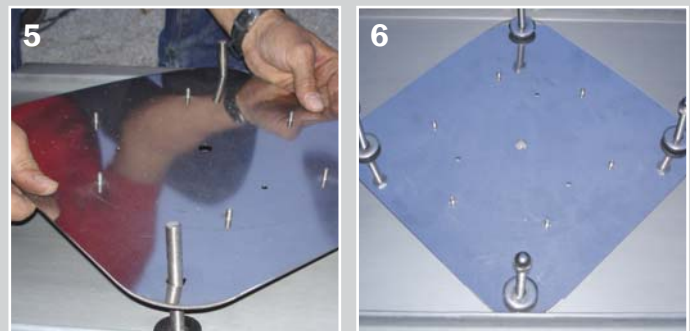
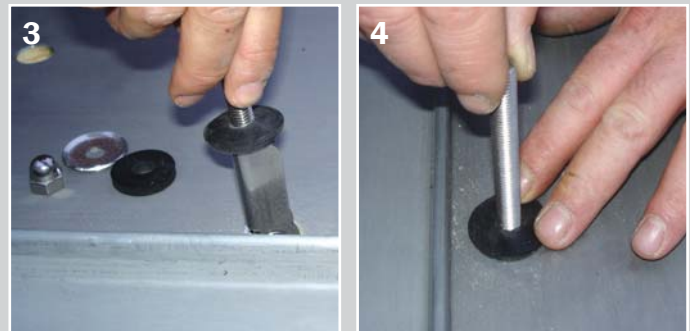
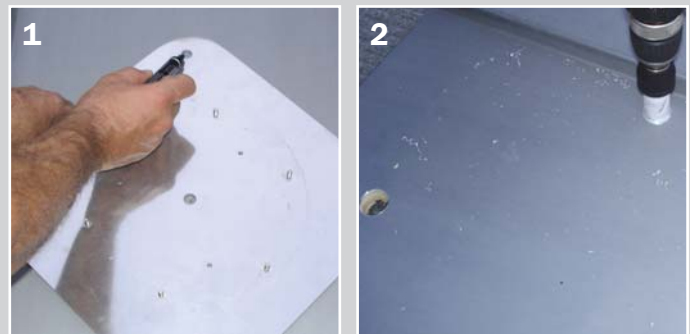
- 4 x M10 hinged bases
- 4 x stainless steel M10 threaded rods
- 4 x EPDM seals thickness 5mm with washer and nut
- 4 joints d'étanchéité EPDM ep=2mm

The AFX-Zn can be installed on boards with a minimum thickness of 15mm. These boards must be fixed onto rafters with a maximum centre distance of 850mm.

If the rafters are spaced further apart, the boards must be thicker. In these cases, installation is also possible provided that the roof has been built in accordance with DTU 40.41 (DTU P34-211/CCT) "roofing using metal sheet components and long zinc sheets" - technical specifications (09/2003). Installation on tongued and grooved floorings is also possible under the same conditions.



A QUICK, EASY AND SEALED INSTALLATION IN LESS THAN 10 mn !



The **ALTifix** anchoring support can be used either as an anchor point or as a lifeline support.

Operation

The support is made of a tube with a diameter of 60mm mounted onto a plate by means of a hinged connector.

The tube includes a mechanism allowing activation at a specific threshold (280kg) combined with an energy absorption device.

If there is a high level of stress, and regardless of the direction, the tube lays itself down thus considerably reducing the stress applied to the fastenings and therefore to the roof itself. The tensile stress is transformed into shearing stress.

Installation

Installed directly onto the roofing. No underside work required.

A sealing kit suitable for each roof is fitted during installation to ensure perfect sealing without the operation needing to be repeated subsequently.

Tests

The support is EN 795 Class A1 certified.

Static tests carried out :

=> 2,5kN, no activation

=> 3kN, the energy absorption device is gradually activated thus limiting the stress on the fastenings.

=> 1,2 to 2,3kN (depending on the supports), the hold is safely held for 3 minutes.

Dynamic tests carried out :

100 kg spaced out at a height of 2,50m

=> The device is activated and the load is safely held without either the fastenings or the support breaking.

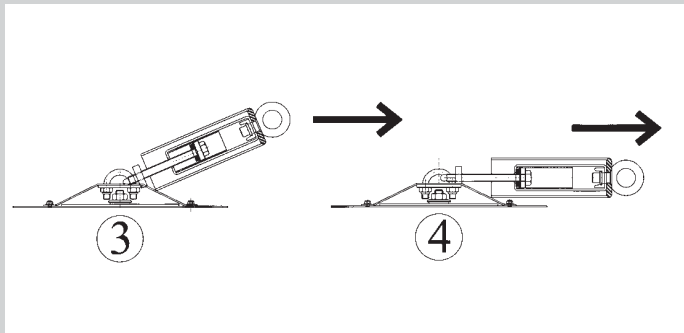
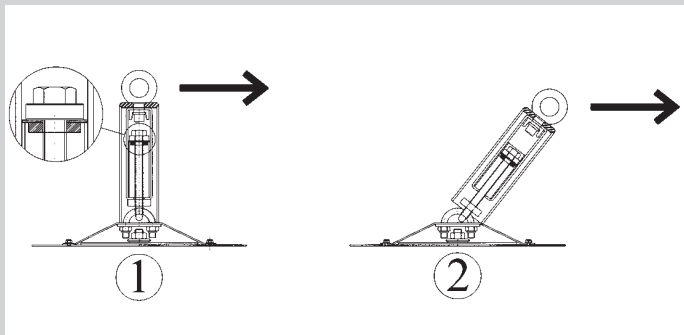
Use as a lifeline support (EN 795 Class C)

As an intermediate support :

the support can be used with no restrictions

As an end support :

Combined with the ABS600 absorber, the support can be used with no restriction.



Ref : ABS600