



STANDARD POSTS :

- ▶ Can be used as an anchor post or lifeline support
- ▶ EN 795 compliant
- ▶ Can be adapted for beams with widths of from 80 to 150mm
- ▶ Height 500mm, galvanised steel
- ▶ Detachable seal collar included

ACCESSORIES :



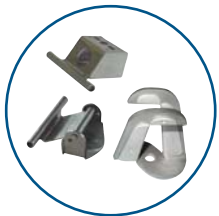
Corner ref ANG



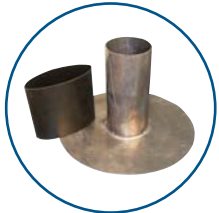
Anchor ring ref AN.P



End plate ref : PEX



Intermediate brackets
ref : IMR / IFR90 / BA.INT



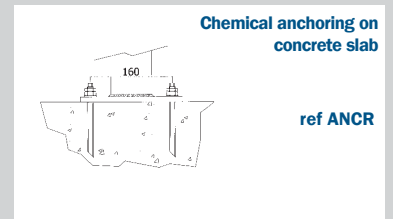
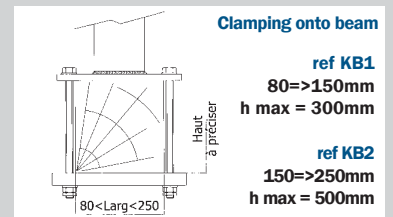
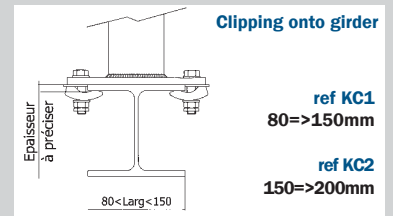
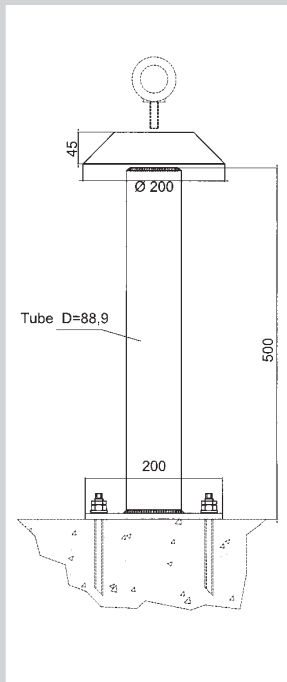
Sealing kit ref : KEFP
Lead sheath d=90mm
h=200mm + heat-shrinkable tube



ref PST



STANDARD FASTENING SUITABLE FOR VARIOUS STRUCTURES



Points d'ancrage

EN 795 A1

PLFIX
Anchoring plate recommended for ceiling fastening or for suspended work.
Fastening by means of 2 x M12 anchors

Supports de ligne de vie

T
T-shaped lifeline end piece for façade or concrete wall.
Rigid and non-deformable. Fastened by means of 2 x M12 anchors.

EN 795 A1

PA
Fall arrest safety plate.
Fastening by means of 1 x M12 anchor

T2
Lifeline end piece for façade.
Deformable for energy absorption.
Fastened by means of 2 x M12 anchors.